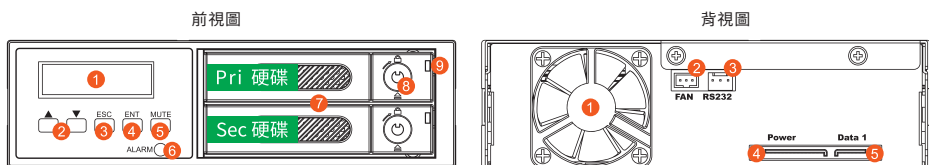


RAIDON

iR2022 快速安裝導引

產品示意圖與配件表



- 前視圖
1. 液晶顯示面板
 2. 選擇鍵(UP/DOWN)
 3. 取消鍵(ESC)
 4. 確認鍵(Enter)
 5. 靜音按鍵(MUTE)
 6. 電源 / 故障顯示燈
 7. 硬碟托盤手把
 8. 硬碟卡榫按鍵
 9. 硬碟讀寫燈

- 背視圖
1. 風扇
 2. 風扇連接埠
 3. R232 連接埠
 4. SATA 15Pin 電源輸入埠
 5. SATA 7Pin 資料連接埠

打開包裝外盒後，包裝內容應包含下列組件：

產品配件表



- 請先確認相關配件與產品本身是否有受損或是缺少配件，若有任何疑問，請與您的經銷商或業務人員聯絡。
- 請前往官網 (www.raidon.com.tw) 下載說明書、驅動程式以及其餘相關資源。

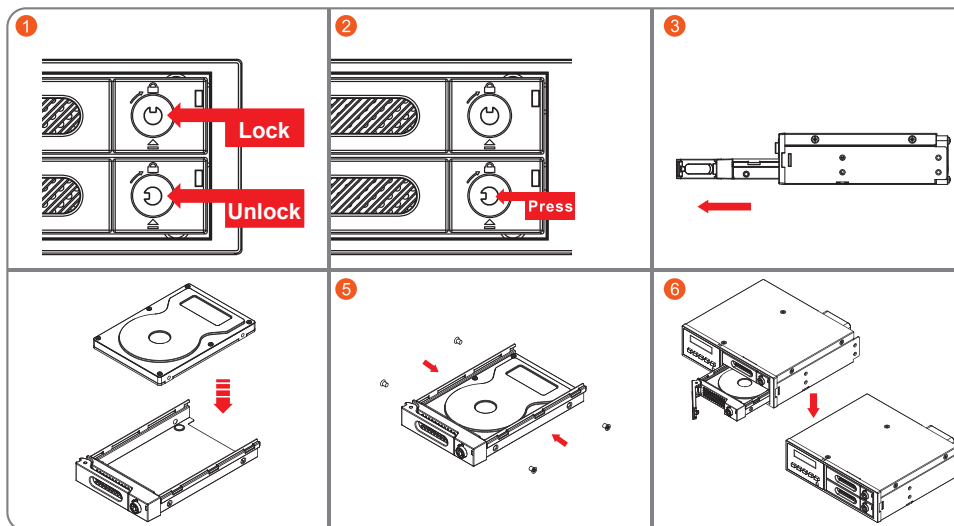


V1.3 (Nov. 2020)

1

硬體安裝

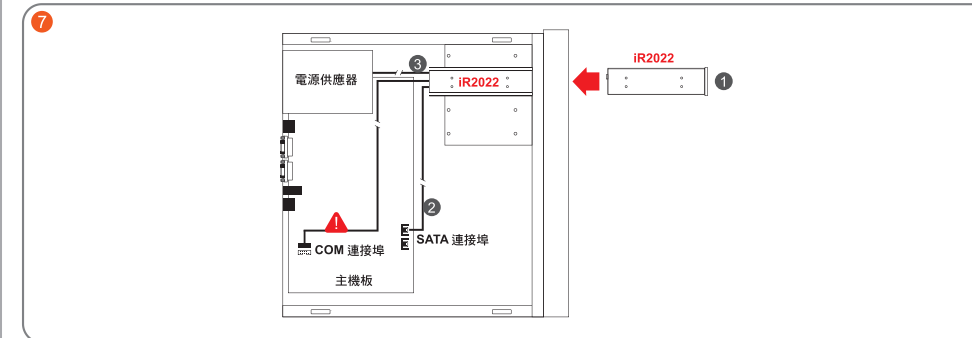
1. 解開硬碟托盤鎖。
2. 按下硬碟卡榫按鍵。
3. 抽出硬碟托盤組。
4. 將 2.5 吋硬碟安裝在硬碟托盤上。
5. 鎖上配件包內的螺絲。
6. 將硬碟托盤安裝回 iR2022。



2

7. 將主體安裝於電腦機殼上的 CD-ROM 位置，請使用配件零件包的螺絲固定，並連接 SATA 連接線與電源線。

NOTE RS232連接埠和RS232連接線：提供工控產業或IPC產業透過RS232進行硬體狀態偵測，如有需要可向銳銳銷售/客服人員 supporting@raidon.com.tw索取相關資料。



8. 硬體安裝完成。一旦開啟電腦，您的作業系統會自動辨識所裝置好的硬碟。如果您的硬碟是必須被格式化的，請依照電腦的作業系統進行硬碟格式化步驟。當完成硬碟格式化後，硬碟便可以進行資料讀寫。

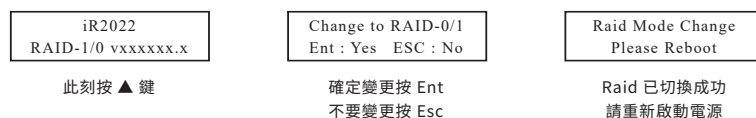
燈號說明

狀態	系統警示燈	硬碟指示燈	蜂鳴器
風扇故障	紫燈恆亮	—	鳴叫
溫度過高(≥50°C)	紫燈恆亮	—	鳴叫
硬碟故障	紫燈恆亮	紅燈恆亮	鳴叫
待機	藍燈恆亮	藍燈恆亮	—
格式化 / 資料存取	藍燈恆亮	藍紫燈交互閃爍	—
Rebuilding-Source	藍燈恆亮	藍燈恆亮	—
Rebuilding-Target	藍燈恆亮	紅燈閃爍	—

3

設定磁碟陣列

1. 將兩顆硬碟放入後，開機時按 ▲ 鍵即可進入 RAID 的切換畫面。(出廠預設值為 RAID 1，若使用 RAID 1 則不須更動。)



2. RAID 1 模式 (default)

- 1) 放置2顆新硬碟在 iR2022。
- 2) 兩顆硬碟進行同步寫入達到備份效果，其中一顆硬碟損壞仍可繼續運作，將損壞硬碟更換新硬碟後將會自動進行資料重建；當裝入的硬碟為1大1小時，iR2022 會將大容量的硬碟當成小容量的硬碟。

使用 RAID 1 的硬碟容量 = [容量小的硬碟機容量]

例：
1TB x2 硬碟機 = 1TB
1TB x1 硬碟機 + 500GB x1 硬碟機 = 500GB

3. RAID 0 模式

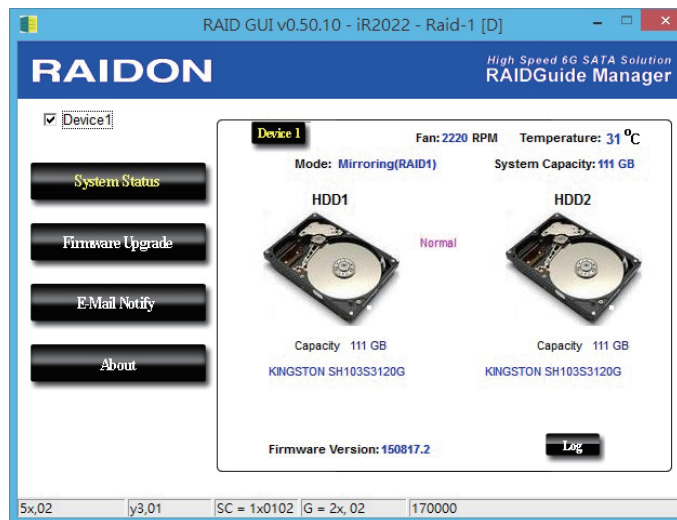
- 1) 放置 2 顆新硬碟在 iR2022。
- 2) 將 2 顆 2.5 吋硬碟容量加總，讀取效率會加快；當裝入的硬碟為 1 大 1 小時，iR2022 會將大容量的硬碟當成小容量的硬碟。

使用 RAID 0 的硬碟容量算法 = [硬碟機數] x [容量小的硬碟機容量]

例：
1TB x2 硬碟機 = 2TB
1TB x1 硬碟機 + 500GB x1 硬碟機 = 1TB

4

啟用 RAIDGuide 軟體的畫面如下



RAIDGuide 可用來觀察 RAID 狀況，以及更新韌體，可於官網下載頁面中找到相關程式。

NOTE 隨意的更新韌體將有可能導致您的系統無法正常運作，若您的系統運作一切正常，建議您不必進行韌體更新。若您有韌體更新上的疑慮，請先聯絡銳銳科技的技術服務人員，或來信 supporting@raidon.com.tw。

5

LCD顯示的訊息內容

1. 開機與正常待機狀態
 - iR2022 RAID-1 v150817.2 → Pri HDD:OK Sec HDD:OK
 - Pri HDD:OK Sec HDD:FAILED
 - Pri HDD:FAILED Sec HDD:OK
2. 硬碟損毀
3. 溫度過高(≥50°C)
 - Pri HDD:OK Sec HDD:OK T
4. 風扇故障
 - Pri HDD:OK F
 - Sec HDD:OK
5. RAID 1 降級: Pri 硬碟機損毀，而 Sec 硬碟機正常
 - RAID-1 degraded
 - Pri : X Sec : O
6. RAID 1 損毀: Pri 與 Sec 硬碟皆損毀
 - RAID-1 failure
 - Pri : X Sec : X
7. RAID 1 損毀: 雙 Source 碟
 - RAID-1 failure
 - Double Source
8. RAID 0 損毀: Pri 硬碟機遺失，而 Sec 硬碟機正常
 - RAID-0 failure
 - Pri : M Sec : O
9. 資料重建
 - Rebuilding
 - Sec→Pri 32%

NOTE 當「T」出現時，是代表系統過熱的警告，但是不至於影響正常資料傳輸，只要改善環境溫度，就可恢復正常。

感謝您使用 銳銳科技股份有限公司 的產品。本手冊裡的資訊在出版前雖然已經被詳細確認，但實際產品規格將以出貨時為準；任何的產品規格或相關資訊更新，請您直接上 www.RAIDON.com.tw 網站查詢，或是直接與您的業務聯絡窗口聯繫，本公司將不另行通知。

如果您對 銳銳科技 的產品有任何疑問，或是想獲得最新產品訊息、使用手冊或韌體，請您聯絡 supporting@raidon.com.tw，我們將儘速回覆您。

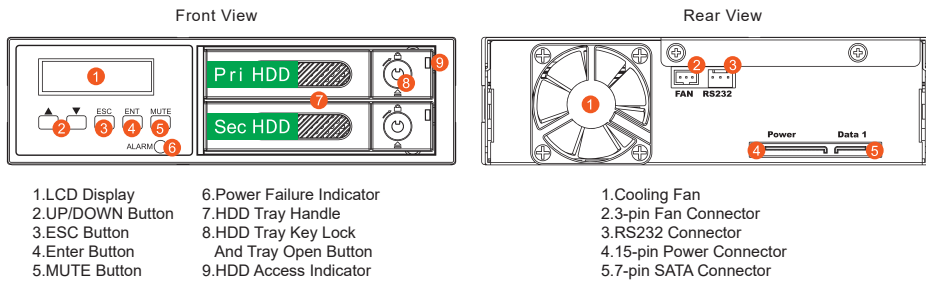
RAIDON 為 銳銳科技股份有限公司 旗下品牌之一
本說明相關產品內容歸 銳銳科技股份有限公司 版權所有

6

RAIDON

iR2022-Quick Installation Guide

Product Diagrams and the Contents of Product Package

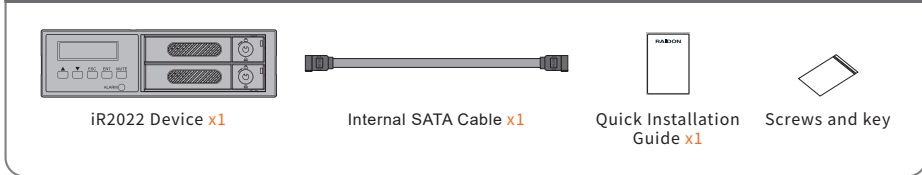


- 1.LCD Display
2.UP/DOWN Button
3.ESC Button
4.Enter Button
5.MUTE Button
- 6.Power Failure Indicator
7.HDD Tray Handle
8.HDD Tray Key Lock
4.15-pin Power Connector
9.HDD Access Indicator

- 1.Cooling Fan
2.3-pin Fan Connector
3.RS232 Connector
4.15-pin Power Connector
5.7-pin SATA Connector

After you open the outer package, make sure that the following items are contained in the package:

Contents of Product Package



- Please check the included parts and the product itself for any damage or missing parts. If you have any questions, please contact the retailer or sales representative.
- Please visit the official website (www.stardom.com.tw) to download user manuals, drivers and other related resources.

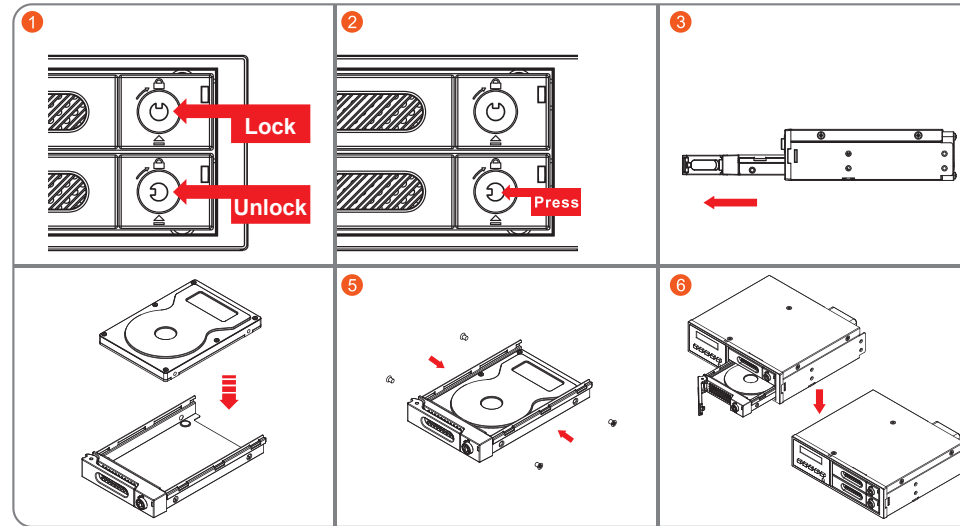


V1.3 (Nov. 2020)

1

Hardware Installation

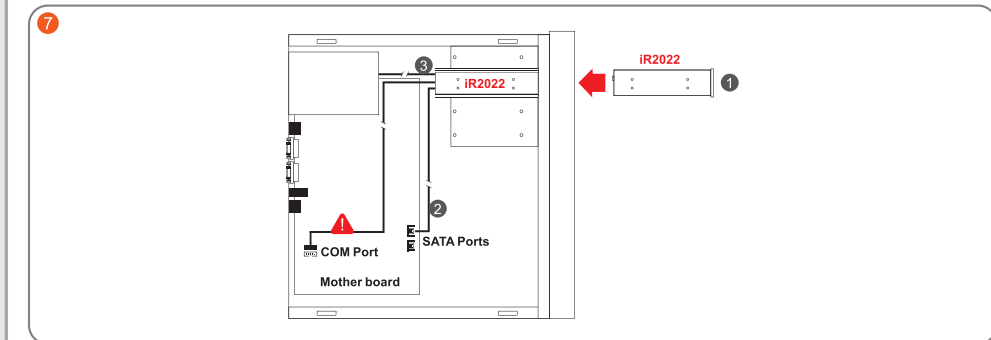
- Unlock the HDD Tray Key Lock and tray open button.
- Press HDD Tray Key Lock and tray open button.
- Pull out the HDD/SSD Trays.
- Install a 2.5" HDD/SSD in a HDD/SSD Tray.
- Screw HDD/SSD with 4 screws from Product Package.
- Install the tray back into the iR2022.



2

- Install device into one of the CD-ROM bays with screws from the accessory kit. Then properly connect SATA cable and power cable from your system to the device.

NOTE RS232 Port: For industrial control system or IPC to monitor the hardware status. More information, please contact your sales window or supporting@raidon.com.tw



- Power on your system after hardware installation is completed, and your operating system will automatically detect the hard drives from booting. Then follow the steps from your operating system to partition and format the drives when necessary, device will be ready to use once the format is completed.

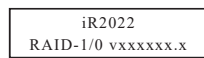
LED Instruction

Status	System Indication	HDD/SSD Indication	Buzzer
Fan Failure (Stop Rotating)	Solid Purple	—	On
Overheat (≥50°C)	Solid Purple	—	On
HDD Failure	Solid Purple	Solid Red	On
Standing-by	Solid Blue	Solid Blue	—
Formating / Accessing Data	Solid Blue	Flashing Blue-Purple	—
Rebuilding (Source)	Solid Blue	Solid Blue	—
Rebuilding (Target)	Solid Blue	Flashing Red	—

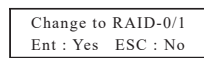
3

RAID Mode Setting

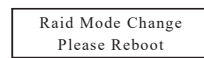
- After inserting two HDDs, turn on system power, press UP/DOWN Button to choose RAID mode. (The Default Setting is RAID 1.)



Press UP/DOWN Button



Please press "Ent" if you want to change it; and please press "ESC" if you want to skip it.



RAID mode is switched, turn OFF power, and then turn ON power again. RAID mode change is down.

- RAID 1 mode (Default)

- Insert two new HDDs into iR2022.
- Under RAID 1 (Mirroring) mode, each WRITE data will be simultaneously saved into two HDDs. The data in two HDDs will be exactly the same. Whenever one of the HDDs is failed, iR2022 will still work fine. And once the failure HDD is replaced by a new one, iR2022 will start REBUILDING work automatically itself.

The total HDD capacity of RAID 1 mode = [capacity of the smaller capacity HDD]

For Example:
1TB x2 HDD = 1TB
1TB x1 HDD + 500GB x1 HDD = 500GB

- RAID 0 mode

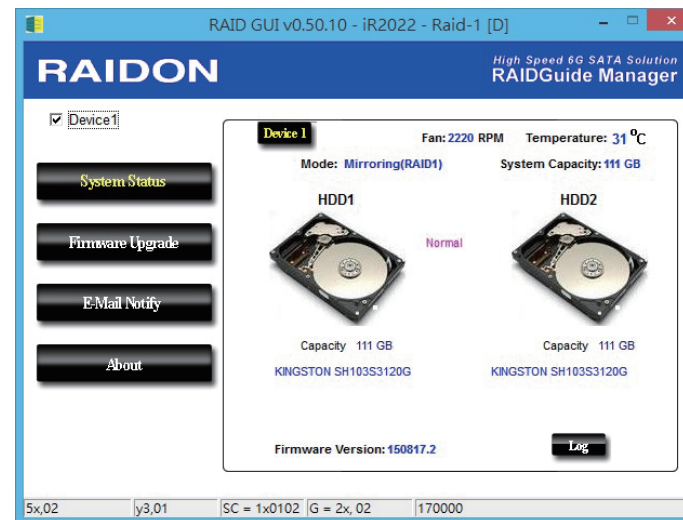
- Insert two new HDDs into iR2022.
- Under RAID 0 mode, two HDDs will work as a large HDD which provides an efficient read/write performance.

The total HDD capacity of RAID 0 mode = [HDD quantity] x [capacity of the smaller capacity HDD]

For Example:
1TB x2 HDD = 2TB
1TB x1 HDD + 500GB x1 HDD = 1TB

4

RAIDGuide Manager, the GUI Monitoring & Firmware Updating Utility



RAIDGuide can be used to observe the RAID status and update the firmware. You can find related programs on the official website download page.

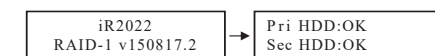


Improper firmware update damage your system. We would strongly suggest you not to update firmware if your iR2022 works fine. Shall you have any question in updating firmware, please contact the technical service staff of **Raidon Technology Inc.** or e-mail to us at "supporting.raidon.com.tw".

5

System Status with LCD Displays

- Booting and Standing-by



- HDD Failure



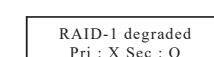
- Overheat (≥50°C)



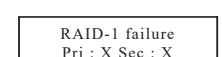
- Fan Failure



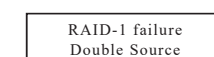
- RAID 1 Degraded: Primary HDD is failure, Secondary HDD is normal.



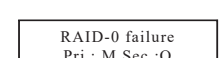
- RAID 1 Failure: Primary and Secondary HDDs are both failure.



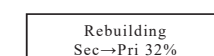
- RAID 1 Failure (Double Source HDD)



- RAID 0 Failure: Primary HDD is missing, Secondary HDD is normal.



- Rebuilding



When "T" is shown, it's an alert of system over heating, but it would still work fine. And as long as the ambient temperature is improved, system shuts off the alert.

Thank you for choosing product from **RAIDON Technology Inc.** This information in the manual has been thoroughly checked before publication, but may not conform to the product actually delivered which mean actual product specifications depend on the product shipped to you. Any update in the specifications or product-related information shall not be subject to further notice but for the latest information on the product, please visit the website as www.RAIDON.com.tw or contact us at supporting@raidon.com.tw, and we will get back to you as soon as possible.

RAIDON is one brand under RAIDON TECHNOLOGY, INC.
Copyright © RAIDON TECHNOLOGY, INC. All rights reserved.

6